

Clover Hall, Ed.D.
Vice President

Christine M. Goodwin
Director

Yuxiang Liu, Ed.D.
Director

Piyaporn Nawarat, Ed.D.
Associate Director

Steven W. Glogocheski
Associate Director

Kathy Beier
Research Analyst

Mary Siconolfi
Senior Secretary

Graduate Students:

Rachel Dolce
Annie Jiang
Pablo Sanchez
Susan Sun
Shantaur Williams

Undergraduates:

Charles Chan
Muzna Hasan
Alison Schwartz
William Wong



ST. JOHN'S UNIVERSITY

Fact Book

Fall 2013 Enrollment Trends Report by Major 2003-2013

Office of Institutional Research

Newman Hall B22

Phone:(718) 990-1869 Fax:(718) 990-2314

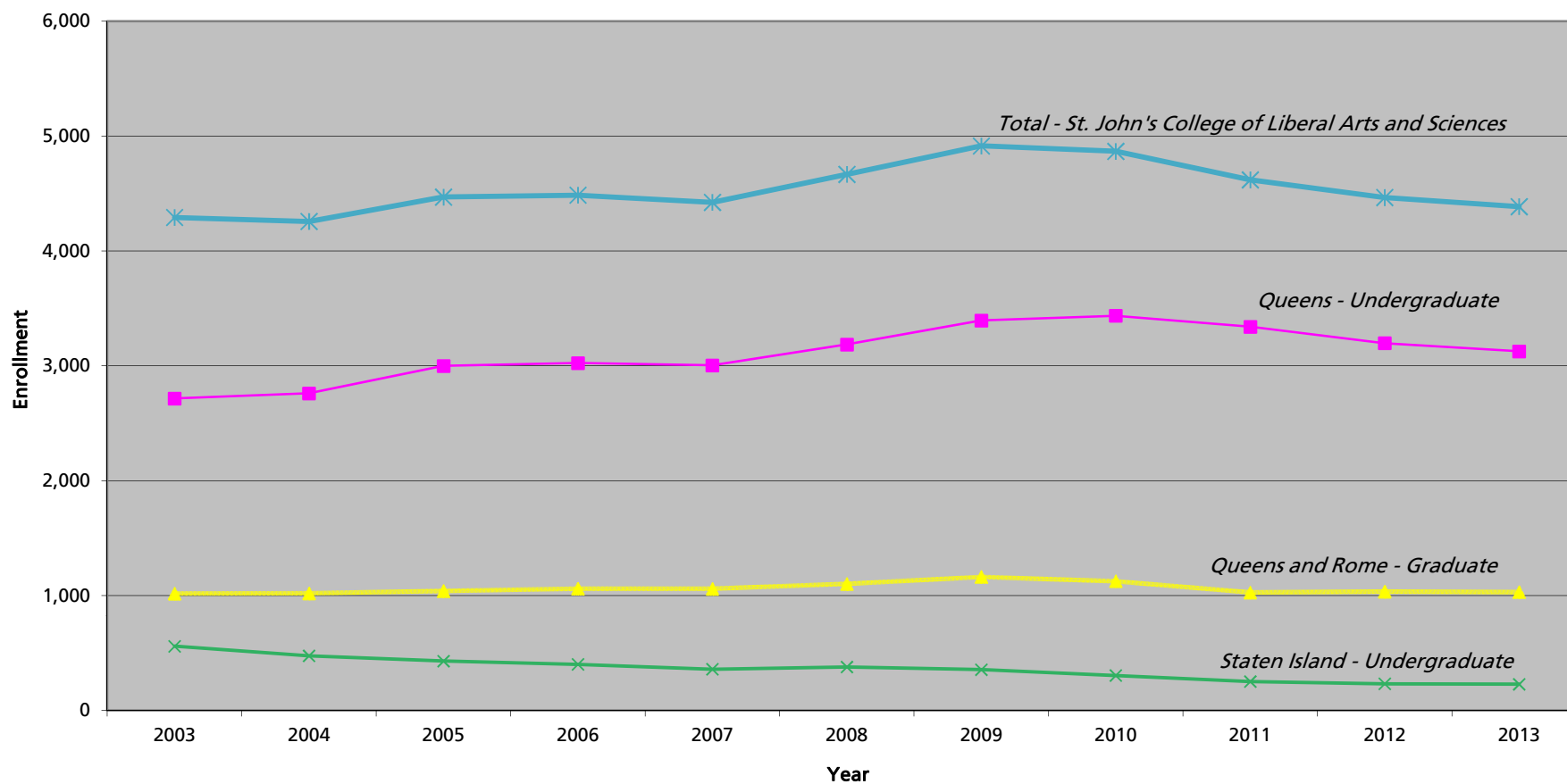
ir@stjohns.edu

stjohns.edu/about/ir



ST. JOHN'S
UNIVERSITY

St. John's College of Liberal Arts and Sciences
Student Enrollment
Fall 2003 - Fall 2013





**St. John's College of Liberal Arts and Sciences (01)
Student Enrollment - Undergraduate Division
Queens Campus
Fall 2003 - Fall 2013**

MAJOR	2003	2004	2005	2006	2007	2008	2009	2010	2011	2012	2013
ANT Anthropology	9	5	6	16	22	20	30	34	43	33	32
ASC Asian Studies	10	13	14	17	14	10	23	23	28	23	22
BIOLOGY COMBINED	519	514	544	573	550	571	632	668	674	712	744
BIO Biology	485	497	526	569	547	568	631	667	673	708	741
BIO1 Biology 7-12 ²	2	-	2	-	-	-	-	-	-	-	-
BIO2 Biology/Dentistry	1	2	4	3	1	1	-	-	-	-	-
BIO3 Biology/Optomety	-	-	-	-	1	1	1	1	1	3	3
BIO5 Biology/Podiatric Medicine	-	-	-	-	-	1	-	-	-	1	-
BIO5 Biology - Self Pace ³	31	15	12	1	1	-	-	-	-	-	-
CHEMISTRY COMBINED	57	69	80	85	86	84	113	112	112	101	112
CHE Chemistry	56	69	79	85	86	84	113	112	112	101	112
CHE1 Chemistry 7-12 ²	-	-	1	-	-	-	-	-	-	-	-
CHE5 Chemistry - Self Pace ³	1	-	-	-	-	-	-	-	-	-	-
ECO Economics	38	42	37	52	57	57	50	47	62	50	48
ENGLISH COMBINED	149	162	179	192	187	228	228	229	207	167	153
ENG English	148	160	177	192	187	228	228	229	207	167	153
ENG1 English 7-12 ²	1	2	2	-	-	-	-	-	-	-	-
ENVIRONMENTAL STUDIES COMBINED	24	20	24	18	25	29	48	54	61	59	55
ESP Environmental Studies (Ecology)	12	14	14	9	18	22	27	32	36	37	34
ESP5 Environmental Studies (Social Sci)	12	6	10	9	7	7	21	22	25	22	21
FINE ARTS COMBINED	112	90	87	88	92	93	98	98	103	97	98
FNA Art	19	19	13	22	23	21	20	11	22	19	16
FNA1 Graphic Design	68	45	44	38	38	43	49	48	44	43	45
FNA2 Creative Photography	14	17	18	14	15	18	19	28	26	23	21
FNA4 Illustration	11	9	12	14	16	11	10	11	11	12	16
FRENCH COMBINED	10	13	17	10	16	21	20	18	20	20	15
FRE French	10	13	17	10	16	21	20	18	20	20	14
FREZ French/Business Admin	-	-	-	-	-	-	-	-	-	-	1
GOVERNMENT COMBINED	250	244	250	235	239	237	252	251	225	223	222
GOV Government & Politics	245	242	246	229	235	229	246	243	220	212	214
GOV1 Government & Politics Social Studies 7-12 ²	1	-	-	-	-	-	-	-	-	-	-
GOV2 Public Admin & Public Service	4	2	4	6	4	8	6	8	5	11	8
HISTORY COMBINED	107	118	104	102	104	133	125	121	115	95	92
HIS History	100	113	102	102	104	133	125	121	115	95	92
HIS1 History Social Studies 7-12 ²	7	5	2	-	-	-	-	-	-	-	-
ITALIAN COMBINED	8	10	22	24	29	25	23	15	12	13	11
ITA Italian	8	8	17	24	29	25	23	15	12	13	11
ITA1 Italian 7-12 ²	-	2	5	-	-	-	-	-	-	-	-
MATHEMATICS COMBINED	38	38	39	44	45	36	37	43	49	45	41
MTH Mathematics	36	38	37	44	45	36	37	43	49	45	41
MTH1 Mathematics 7-12 ²	2	-	2	-	-	-	-	-	-	-	-
PHILOSOPHY COMBINED	50	58	74	69	68	74	81	92	109	88	92
PHI Philosophy	36	58	64	61	59	59	73	74	85	76	78
PHI1 Philosophy - Theology	-	-	-	1	6	2	2	9	-	-	-
PHI2 Philosophical - Theological Studies-Cert Program	14	-	10	7	3	13	6	9	24	12	14

² No longer offered

³ Not a program



**St. John's College of Liberal Arts and Sciences (01)
Student Enrollment - Undergraduate Division
Queens Campus
Fall 2003 - Fall 2013**

MAJOR	2003	2004	2005	2006	2007	2008	2009	2010	2011	2012	2013
PHYSICAL SCIENCE COMBINED	15	14	15	22	30	44	38	43	43	49	30
PHY1 Physical Science	15	14	15	21	13	16	15	17	10	16	11
PHY3 Physical Science (Bio Med Engineering)	-	-	-	1	8	17	15	17	27	18	7
PHY4 Physical Science (Pre Engineering)	-	-	-	-	9	11	8	9	6	15	12
PHYSICS COMBINED	15	22	22	29	27	27	33	31	35	37	38
PHY Physics	13	18	17	24	23	25	31	28	33	36	38
PHY2 Physics 7-12 ²	-	1	1	-	-	-	-	-	-	-	-
PHYS Physics - Self Pace ³	1	-	-	-	-	-	-	-	-	-	-
MTH3 Mathematical Physics	1	3	4	5	4	2	2	3	2	1	-
PSYCHOLOGY COMBINED	503	500	503	541	513	519	577	603	610	573	560
PSY Psychology	503	500	503	541	513	519	577	603	610	573	552
PSY7 Psychology / Criminology & Justice	-	-	-	-	-	-	-	-	-	-	8
SOCIOLOGY COMBINED	58	66	57	62	74	79	85	74	74	93	81
SOC Sociology	58	66	57	62	74	77	80	69	72	89	79
SOC3 BA Sociology/MA Criminology & Justice	-	-	-	-	-	2	5	5	2	4	2
SPANISH COMBINED	20	18	17	24	20	21	25	24	25	24	13
SPA Spanish	18	18	17	24	20	21	25	24	25	24	13
SPA1 Spanish 7-12 ²	2	-	-	-	-	-	-	-	-	-	-
SPE Speech Pathology & Audiology	103	122	137	147	113	115	112	109	115	141	147
SPEECH COMBINED	4	4	5	6	5	7	9	12	12	9	6
SPE1 Speech (Public Add., Gen. Speech)	4	4	5	6	5	6	9	12	12	9	6
SPE2 Speech	-	-	-	-	-	1	-	-	-	-	-
THE Theology	19	21	22	23	16	18	18	18	11	11	10
0000 Undecided	553	560	674	602	626	670	668	609	560	464	431
NM Non-Matriculated	45	38	70	43	46	68	70	108	35	70	73
TOTAL:	2,716	2,761	2,999	3,024	3,004	3,186	3,395	3,436	3,340	3,197	3,126
PERCENT CHANGE:		1.7%	8.6%	0.8%	-0.7%	6.1%	6.6%	1.2%	-2.8%	-4.3%	-2.2%

Notes:

As of Fall 2011, students solely enrolled in The Language Connection are no longer included in SJC enrollment

As of Fall 2012, Undeclared students are now coded as Undecided students

Combined Degree Students are counted within their major code

² No longer offered

³ Not a program



St. John's College of Liberal Arts and Sciences (21)
 Student Enrollment - Graduate Division
 Queens Campus
 Fall 2003 - Fall 2013

MAJOR	2003	2004	2005	2006	2007	2008	2009	2010	2011	2012	2013
ASIAN STUDIES COMBINED	14	10	13	13	11	11	14	14	12	17	20
ASC Asian Studies	-	1	-	-	-	-	-	-	-	-	-
CHS Chinese Studies	2	1	4	2	1	2	3	2	1	2	2
AAS Asian & African Cultural Studies	-	-	-	-	-	-	1	1	-	-	-
EAS East Asian Studies	12	8	9	11	10	9	10	11	11	15	18
AUDIOLOGY & SPEECH COMBINED	139	164	153	136	158	158	153	152	156	150	142
AUD Audiology	-	-	4	7	12	36	34	33	54	52	42
SPE Speech Pathology & Audiology	139	164	149	129	146	122	119	16	-	-	-
SPE5 Speech Language Pathology	-	-	-	-	-	-	-	103	102	98	100
BIOLOGY	50	52	46	46	44	40	34	38	36	39	38
BIO Biology	15	19	15	17	14	11	12	14	12	15	14
	MS										
	Ph.D.	35	33	31	29	30	29	22	24	24	24
CHE Chemistry	17	23	33	35	27	21	24	28	21	27	23
CRIM Criminology and Justice	29	33	37	38	39	30	29	39	54	34	23
ENGLISH COMBINED	42	54	51	60	73	73	80	81	92	92	96
ENG English	20	27	24	26	35	23	27	27	26	21	24
	MA										
	DA	22	27	27	34	38	50	53	54	66	71
GDSJ Global Dev & Social Justice	-	-	-	-	-	-	32	36	38	37	49
GOVERNMENT COMBINED	59	60	69	66	55	53	65	61	53	59	53
GOV Government & Politics	58	59	69	65	55	53	64	60	51	57	51
GOV3 Govt & Politics/Library Sci	1	1	-	1	-	-	1	1	2	2	-
GOV9 Government & Politics/Library Info Sci	-	-	-	-	-	-	-	-	-	-	2
HISTORY COMBINED	51	50	49	52	49	51	47	52	52	67	76
HIS History	19	22	18	25	23	17	15	17	22	24	21
	MA										
HIS2 Modern World History	32	28	31	27	26	34	32	35	30	37	44
	DA										
HIS3 Public History	-	-	-	-	-	-	-	-	-	6	11
	MA										
LAC Latin American and Caribbean Studies	1	2	3	2	-	3	-	-	1	1	1
LST Liberal Studies	15	15	12	31	60	55	24	14	12	14	17
LIBRARY SCIENCE COMBINED	116	94	90	92	105	143	187	136	79	69	64
LIS Library Science	116	93	90	90	104	143	184	134	75	54	22
	MLS										
LIS1 Library & Information Science*	-	1	-	2	1	-	3	2	4	2	-
	ADVCR										
LIS2 Library & Information Science	-	-	-	-	-	-	-	-	-	13	42
	MS										
MTH Mathematics	8	7	10	15	12	8	5	7	8	9	5
MIN Ministerial Studies	7	4	4	5	4	4	2	2	2	1	-

Note: Queens figures include Online Learning and Oakdale Students. Please refer to the Online Learning and Oakdale Enrollment Reports.
 * Previously Library & Information Studies



St. John's College of Liberal Arts and Sciences (21)
Student Enrollment - Graduate Division
Queens Campus
Fall 2003 - Fall 2013

MAJOR		2003	2004	2005	2006	2007	2008	2009	2010	2011	2012	2013	
PSYCHOLOGY COMBINED		261	274	291	263	254	260	269	252	229	243	236	
PSY1	Gen-Exper Psychology	21	26	26	21	17	15	19	23	17	24	27	
PSY2	Clinical Psy-General Track	45	40	37	34	35	35	35	38	36	34	30	
PSY3	Clinical Psy-Clin Child Track	46	39	39	35	29	32	32	28	30	30	30	
PSY5	School Psychology	MS	29	45	54	44	51	52	64	60	47	39	34
PSY5	School Psychology	Psy.D	90	94	101	99	94	90	86	60	54	59	65
PSY6	School Psychology/Bilingual Ext	MS	5	7	9	8	9	11	9	5	6	14	12
PSY6	School Psychology/Bilingual Ext	Psy.D	25	23	25	22	19	25	24	38	39	43	38
SOC	Sociology	17	22	21	33	38	29	35	31	31	36	37	
SPA	Spanish	14	22	21	19	16	9	9	15	19	16	14	
THEOLOGY COMBINED		59	68	64	55	51	40	38	37	45	40	42	
THE	Theology	55	66	62	50	49	39	38	37	44	37	39	
THE2	Theo Catechetical Ministry	4	2	2	5	2	1	-	-	1	3	3	
0000	Undecided	-	1	-	-	-	-	-	-	-	-	-	
NM	Non-Matric	60	9	6	34	20	67	71	84	50	52	59	
TOTAL QUEENS:		959	964	973	995	1,016	1,055	1,118	1,079	990	1,003	995	
PERCENT CHANGE:			0.5%	0.9%	2.3%	2.1%	3.8%	6.0%	-3.5%	-8.2%	1.3%	-0.8%	

Rome Campus

MAJOR		2003	2004	2005	2006	2007	2008	2009	2010	2011	2012	2013
GOV	Government & Politics	56	55	66	64	43	46	45	47	37	32	36
NM	Non-Matric	2	1	1	1	-	1	-	-	-	-	-
TOTAL ROME:		58	56	67	65	43	47	45	47	37	32	36
PERCENT CHANGE:			-3.4%	19.6%	-3.0%	-33.8%	9.3%	-4.3%	4.4%	-21.3%	-13.5%	12.5%
QUEENS & ROME TOTAL:		1,017	1,020	1,040	1,060	1,059	1,102	1,163	1,126	1,027	1,035	1,031
PERCENT CHANGE:			0.3%	2.0%	1.9%	-0.1%	4.1%	5.5%	-3.2%	-8.8%	0.8%	-0.4%

Notes: Queens figures include Online Learning and Oakdale Students. Please refer to the Online Learning and Oakdale Enrollment Reports.
Some students are coded within their major code with a degree code of Non-Matric



St. John's College of Liberal Arts and Sciences (51)
 Staten Island Campus - Undergraduate
 Fall 2003 - Fall 2013

MAJOR	2003	2004	2005	2006	2007	2008	2009	2010	2011	2012	2013
CUS Computer Science	52	25	14	22	16	17	18	19	14	15	8
ECO Economics	1	-	-	-	3	2	-	1	-	1	1
ENGLISH COMBINED	52	50	43	49	41	32	30	28	19	23	22
ENG English	52	49	43	49	41	32	30	28	19	23	22
ENG1 English 7-12 ²	-	1	-	-	-	-	-	-	-	-	-
GOV Government & Politics	23	20	25	25	21	24	23	20	16	19	20
HIS History	11	12	14	19	23	21	15	16	13	11	7
LAS Liberal Arts	144	130	97	44	17	8	6	6	1	1	-
MATHEMATICS COMBINED	4	7	6	4	5	4	3	4	2	6	11
MTH Mathematics	4	6	6	4	5	4	3	4	2	6	11
MTH1 Mathematics 7-12 ²	-	1	-	-	-	-	-	-	-	-	-
NUR Nursing^{2,9}	8	-	-	-	-	-	-	-	-	-	-
PHI Philosophy	1	1	2	2	-	1	1	1	1	3	2
PSYCHOLOGY COMBINED	85	75	85	75	79	97	100	86	70	56	57
PSY Psychology	85	75	85	75	79	97	100	86	70	56	56
PSY7 Psychology/Criminology & Justice	-	-	-	-	-	-	-	-	-	-	1
SOCIOLOGY/SOCIAL STUDIES COMBINED	4	17	19	22	16	23	15	11	6	7	4
SOC Sociology	1	10	9	10	11	10	6	6	3	3	3
SST Social Studies	3	6	9	12	5	13	9	5	3	4	1
SST1 Social Studies 7-12 ²	-	1	1	-	-	-	-	-	-	-	-
SPE Speech Pathology & Audiology	36	30	30	44	53	55	64	63	58	51	53
THE Theology	2	4	3	3	3	4	4	2	1	4	3
0000 Undecided	135	105	91	78	81	91	76	47	51	36	40
NM Non-Matric	1	-	1	15	2	-	1	1	-	-	1
TOTAL	559	476	430	402	360	379	356	305	252	233	229
PERCENTAGE CHANGE		-14.8%	-9.7%	-6.5%	-10.4%	5.3%	-6.1%	-14.3%	-17.4%	-7.5%	-1.7%

² No longer offered

⁹ In affiliation with St. Vincent's Catholic Medical Centers of New York.

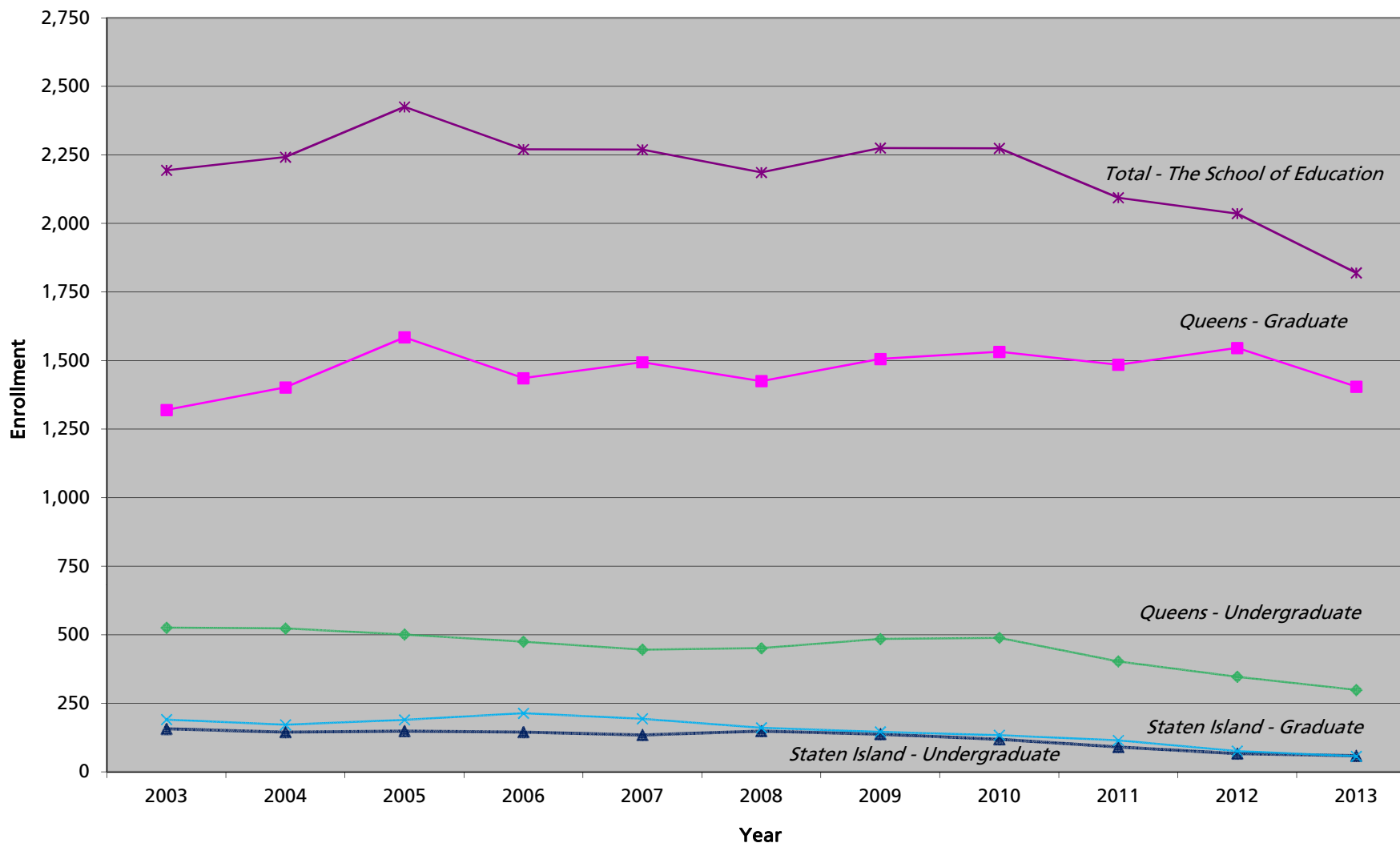
As of Fall 2012, Undeclared students are now coded as Undecided

Combined degree students are coded within major codes



ST. JOHN'S
UNIVERSITY

The School of Education Student Enrollment Fall 2003 - Fall 2013





The School of Education (12)
 Student Enrollment - Undergraduate Division
 Queens Campus
 Fall 2003 - Fall 2013

MAJOR	2003	2004	2005	2006	2007	2008	2009	2010	2011	2012	2013
EDU3 Art Education K-12 ²	2	-	-	-	-	-	-	-	-	-	-
EDUCATION PRE K-6/CHILDHOOD COMBINED	384	363	346	318	278	272	289	289	235	215	185
EDU Elementary Edu Grades Pre K-6 ²	72	-	-	-	-	-	-	-	-	-	-
EDU2 Elem Ed Pre K-6 & Sp Ed K-6 ²	5	-	-	-	-	-	-	-	-	-	-
EDUD Elem Ed/Spec Ed (PreK-6): Dual Cert. ²	1	-	-	-	-	-	-	-	-	-	-
CED Childhood Education 1-6	275	321	309	283	234	198	208	206	161	153	150
CEDS Childhood Edu & Special Edu 1-6	31	41	35	35	44	74	81	83	74	62	35
CHD Childhood Edu - Non Cert	-	1	2	-	-	-	-	-	-	-	-
EDU PRE K-6 & 7-9/ ADOLESCENCE COMBINED	139	159	155	157	168	179	196	200	167	131	114
EDUE Elem Ed Pre K-6 & 7-9 English ²	1	-	-	-	-	-	-	-	-	-	-
EDUG Elem Ed Pre K-6 & 7-9 Gen Sci ²	1	-	-	-	-	-	-	-	-	-	-
EDUH Elem Ed Pre K-6 & 7-9 S.S. ²	1	-	-	-	-	-	-	-	-	-	-
EDUM Elem Ed Pre K-6 & 7-9 Math ²	1	-	-	-	-	-	-	-	-	-	-
EDUS Elem Ed Pre K-6 & 7-9 Span ²	1	-	-	-	-	-	-	-	-	-	-
ADE Adolescence Edu - Non-Cert.	-	-	-	-	-	1	-	-	-	-	-
AEB Adolescence Edu/Biology	-	-	-	4	10	14	21	18	15	8	9
AEE Adolescence Edu/English	42	45	46	45	44	42	47	57	44	36	33
AEM Adolescence Edu/Mathematics	31	47	48	44	39	41	45	42	39	35	33
AEP Adolescence Edu/Physics	8	9	7	8	5	8	4	8	6	-	-
AESP Adolescence Edu/Spanish	7	8	9	8	12	17	14	13	8	4	4
AESS Adolescence Edu/Social Studies	46	50	45	48	58	56	65	62	55	48	35
0000 Undecided	-	1	-	-	-	-	-	-	-	-	-
NM Non-Matric	1	-	-	-	-	-	-	-	1	1	-
TOTAL:	526	523	501	475	446	451	485	489	403	347	299
PERCENT CHANGE:		-0.6%	-4.2%	-5.2%	-6.1%	1.1%	7.5%	0.8%	-17.6%	-13.9%	-13.8%

Combined degree students are coded within their major codes

² No longer offered



The School of Education (62)
 Student Enrollment - Undergraduate Division
 Staten Island Campus
 Fall 2003 - Fall 2013

MAJOR	2003	2004	2005	2006	2007	2008	2009	2010	2011	2012	2013
ADOLESCENCE COMBINED	33	30	31	34	31	33	35	26	21	19	16
AEE Adolescence Edu/English	16	9	6	11	10	16	16	11	8	9	6
AEM Adolescence Edu/Mathematics	8	10	9	11	9	8	9	10	9	5	6
AESS Adolescence Edu/Social Studies	9	11	16	11	12	9	10	5	4	5	4
ADE Adolescence Ed - Non Cert.	-	-	-	1	-	-	-	-	-	-	-
EDUCATION PRE K-6/CHILDHOOD COMBINED	124	115	118	111	104	116	103	93	70	48	43
EDU Elementary Edu Grades Pre K-6 ^{2,10}	5	-	-	-	-	-	-	-	-	-	-
CED Childhood Education 1-6	107	101	96	95	89	102	91	79	60	43	41
CEDS Childhood Edu & Spec Edu 1-6	12	13	20	16	13	14	12	14	10	5	2
CHD Childhood Edu - Non Cert	-	1	2	-	2	-	-	-	-	-	-
TOTAL	157	145	149	145	135	149	138	119	91	67	59
PERCENTAGE CHANGE		-7.6%	2.8%	-2.7%	-6.9%	10.4%	-7.4%	-13.8%	-23.5%	-26.4%	-11.9%

² No longer offered

¹⁰ Beginning in Fall 2001, entering students majoring in Elementary Education Pre K-6 are coded as Childhood Education majors.

Combined degree students are coded within their major codes



The School of Education (32)
 Student Enrollment - Graduate Division
 Queens Campus
 Fall 2003 - Fall 2013

MAJOR	2003	2004	2005	2006	2007	2008	2009	2010	2011	2012	2013
CHILDHOOD/ELEM. EDUCATION COMBINED	349	269	219	184	132	153	178	117	70	64	33
EDU Elementary Education Pre K-6 ²	148	97	94	65	16	35	1	1	-	-	-
CEC Childhood Education: Career	84	118	115	112	109	110	119	108	56	45	30
CED Childhood Education 1-6	-	-	-	-	1	4	56	8	9	17	3
CEF Childhood Education: Field	13	9	10	7	6	4	2	-	3	2	-
CHL Childhood Education Teaching Fellow	104	45	-	-	-	-	-	-	-	-	-
CHD Childhood Edu - Non Cert	-	-	-	-	-	-	-	-	2	-	-
EARLY CHILDHOOD ED. COMBINED	46	67	68	62	49	40	41	26	17	14	10
ECC Early Childhood Edu: Career	28	48	55	48	39	32	29	18	15	13	9
ECF Early Childhood Edu: Field	18	19	13	14	10	8	12	8	2	1	1
ED ADMIN COMBINED	270	346	529	509	399	369	351	386	387	357	379
EDAS Edu Admin & Supervsn (EDD,PD,ADVCR)	163	209	181	152	129	95	95	91	86	88	95
EDAS Ed Admin & Supervision (MSED, NM)	28	50	47	2	1	-	-	-	-	-	-
SBL School Building Leadership	-	-	206	258	185	147	112	108	112	120	129
SBDL School Building/School District Leadership	-	-	-	-	-	40	38	44	44	30	36
SDL School District Leadership	-	-	1	2	1	5	4	9	8	3	3
ADS Administrative Studies	-	-	-	-	-	-	-	1	-	-	-
INL Instructional Leadership (EDD,ADVCR)	79	87	94	95	83	82	94	125	127	113	115
EDGT/GTED Gifted Education: 2011-Cert & 2012-ADVCR	-	-	-	-	-	-	8	8	10	3	1
READING/LITERACY COMBINED	143	108	88	74	54	68	75	106	109	116	109
EDU4 Reading/Special Education ²	1	-	-	-	-	-	-	-	-	-	-
RDS Reading Specialist ²	64	-	2	-	-	-	-	-	-	-	-
LTC Teaching Literacy B-12	-	-	-	-	4	3	3	3	4	4	3
LTC1 Literacy (Ph.D.)	-	-	-	-	-	14	10	22	19	31	25
LTC2 Teaching Literacy Grades 5-12	-	-	-	-	-	-	-	2	1	-	4
LTC3 Teaching Literacy Birth-6	-	-	-	-	-	-	5	4	9	5	4
LTC4 Teach Lit B-6 & Tch Child w/Dis	-	-	-	-	-	-	5	17	23	21	20
LTC5 Literacy 5-12	4	7	11	11	6	8	7	11	10	11	9
LTC6 Teach Lit 5-12 & TESOL K-12	-	-	-	-	-	-	-	-	1	1	6
LTC7 Teach Lit B-6 & TESOL K-12	-	-	-	-	-	-	-	6	6	14	19
LTC8 Literacy Leadership Coach	-	-	-	-	-	-	-	-	-	6	3
LTCB Literacy Birth-6	74	101	75	63	44	43	45	41	36	23	16
COUNSELOR COMBINED	173	141	127	91	95	105	137	151	148	122	96
EDU8 School Counselor with Bili Ext	22	17	22	15	19	14	17	19	19	20	4
SHC School Counselor	94	77	68	60	70	76	86	83	70	43	37
EDU6 Student Dev Prac Higher ED ²	42	25	18	6	1	-	-	-	-	-	-
CMHC Clinical Mental Health Counseling ¹¹	15	22	19	10	5	15	34	49	59	59	55



The School of Education (32)
 Student Enrollment - Graduate Division
 Queens Campus
 Fall 2003 - Fall 2013

Major	2003	2004	2005	2006	2007	2008	2009	2010	2011	2012	2013
SECONDARY/ADOLESCENCE EDUCATION COMB.	238	311	309	309	312	290	275	255	263	331	242
BIO1 Biology 7-12 ²	5	5	-	-	-	-	-	-	-	-	-
AEB Adolescence Edu/Biology	-	-	1	1	-	-	1	2	1	1	3
ENG1 English 7-12 ²	8	1	-	-	-	-	-	-	-	-	-
AEE Adolescence Edu/English	-	1	7	6	8	5	9	6	5	5	5
MTH1 Mathematics 7-12 ²	10	3	1	-	-	-	-	-	-	-	-
AEM Adolescence Edu/Mathematics	-	-	6	3	1	1	3	5	3	7	6
SPA1 Spanish 7-12 ²	4	1	-	-	-	-	-	-	-	-	-
AESP Adolescence Edu/Spanish	-	-	2	1	1	1	2	2	-	1	-
SST1 Social Studies 7-12 ²	10	7	1	-	-	-	-	-	-	-	-
AESS Adolescence Edu/Social Studies	-	6	7	5	7	3	4	4	4	5	6
CHE1 Chemistry 7-12 ²	1	-	-	-	-	-	-	-	-	-	-
ADE Adolescence Edu - Non Cert.	-	-	-	-	-	-	-	-	1	-	-
AEC Adolescence Education: Career	93	155	146	135	132	132	165	162	158	105	83
AEET Adolescence Edu: Eng 7-12 (TF)	-	-	-	20	48	38	14	-	-	21	20
AEF Adolescence Education: Field	27	23	17	10	9	5	2	2	-	-	-
AERP Adolescence Education: Residency Prog	-	-	-	-	-	-	-	-	-	62	33
AMC Alt. Cert.-Adol Math 7-12 (TF)	-	106	44	128	51	105	75	28	-	63	82
AMSP Adolescent Math Special Edu	-	-	-	-	-	-	-	37	88	56	1
MDM Alter Cert.Child Ed MID Math	80	3	77	-	55	-	-	-	-	1	-
MCE5 Middle Childhood 5-6 Extension	-	-	-	-	-	-	-	4	-	3	-
MCE7 Middle Childhood 7-9 Extension	-	-	-	-	-	-	-	3	3	1	3
SPECIAL EDUCATION COMBINED	57	82	87	70	95	119	152	174	182	198	283
EDSP Special Education ²	17	1	-	-	-	-	-	-	-	-	-
EDU7 Special Ed With Bilingual Ext ²	3	-	-	-	3	-	-	-	-	-	-
TCD Teach Child with DIS Childhood	18	33	45	41	28	33	29	27	35	25	33
TCD1 Teach Stu with DIS 7-12 Gener	-	-	-	-	-	-	-	-	-	4	15
TCD2 Alt Cert Stu with Dis 7-12 Gen	-	-	-	-	-	-	-	-	-	51	139
TFD Teach Fellow: Child Disabilities	19	45	28	1	1	-	-	-	-	2	-
CSPE Childhood & Childhood Spec Edu	-	3	14	28	63	86	123	129	108	81	63
CHDS Child Edu/ Spec Edu-Non Cert	-	-	-	-	-	-	-	-	1	-	-
ECTD Early Child B-2 & Teac Dis B-2	-	-	-	-	-	-	-	18	35	32	30
ECDF Early Child/Dis B-2: Field Chg	-	-	-	-	-	-	-	-	3	3	3
BILINGUAL EDUCATION COMBINED	4	12	13	19	22	4	47	61	57	47	17
BIL Bilingual Extension	-	-	-	-	-	1	3	7	11	11	8
BIL1 Bilingual Ed: ITI	-	-	-	-	-	-	34	47	32	20	2
BIL2 Bilingual Special Ed: ITI	-	-	-	-	-	-	6	7	14	15	5
BIL3 Bilingual Pupil Person Ser: ITI	-	-	-	-	-	-	1	-	-	1	2
EDU9 Bilingual/Multicultural Edu	4	12	13	19	22	3	3	-	-	-	-
TESOL COMBINED	36	66	141	108	111	111	158	176	199	252	194
TES TESOL	36	62	132	93	82	75	100	103	101	121	96
TES1 TESOL: ITI	-	-	-	-	-	-	12	22	30	32	6
TES2 TESOL Special Ed: ITI	-	-	-	-	-	-	-	4	19	18	12
TES3 TESOL K-12	-	-	-	-	-	-	-	-	8	25	31
CTES Childhood Education & TESOL	-	4	9	15	29	36	46	47	41	56	49
NM Non-Matric	4	-	4	10	225	166	92	80	53	45	42
TOTAL:	1,320	1,402	1,585	1,436	1,494	1,425	1,506	1,532	1,485	1,546	1,405
PERCENT CHANGE:		6.2%	13.1%	-9.4%	4.0%	-4.6%	5.7%	1.7%	-3.1%	4.1%	-9.1%

² No longer offered

¹¹ Previously known as Mental Health Counseling & Rehabilitation Counseling

Note: Figures include Online Learning and Oakdale Students. Please refer to the Online Learning and Oakdale Enrollment Reports.



The School of Education (82)
 Student Enrollment - Graduate Division
 Staten Island Campus
 Fall 2003 - Fall 2013

MAJOR	2003	2004	2005	2006	2007	2008	2009	2010	2011	2012	2013
CHILDHOOD/ELEMENTARY EDUCATION COMBINED	65	58	59	49	41	43	43	41	24	11	8
EDU Elementary Education Pre K-6 ²	10	5	6	5	6	-	-	-	-	-	-
CEC Childhood Education: Career	54	50	51	44	35	38	36	33	18	8	7
CED Childhood Education 1-6	-	-	2	-	-	4	5	6	4	2	-
CEF Childhood Education: Field	1	3	-	-	-	1	1	2	2	1	1
CHD Childhood Edu - Non Cert	-	-	-	-	-	-	1	-	-	-	-
ED ADMIN & SUPERVISION COMBINED	29	33	57	93	74	45	24	24	16	10	7
EDAS Educational Admin & Supervsn (PD/ADVCR) ²	24	20	10	5	1	-	-	-	-	-	-
EDAS Educational Admin & Supervsn (MSED,NM) ²	5	13	13	1	-	-	-	-	-	-	-
SBDL Sch Building/Sch Distr Leaders	-	-	-	-	-	-	-	2	2	1	2
SBL School Building Leadership	-	-	34	87	73	45	24	21	14	9	5
SDL School District Leadership	-	-	-	-	-	-	-	1	-	-	-
READING LITERACY COMBINED	57	42	33	28	29	26	12	13	9	12	12
RDS Reading Specialist ²	11	1	-	-	-	-	-	-	-	-	-
LTC Teaching Literacy B-12	-	-	-	-	-	-	3	4	2	-	-
LTCB Literacy Birth-6	40	37	30	27	28	25	9	8	3	3	1
LTC3 Teaching Literacy Birth-6 (ADVCR)	-	-	-	-	-	-	-	-	-	-	1
LTC4 Teach Lit B-6 & Tch Child w/ Dis	-	-	-	-	-	-	-	-	2	5	5
LTC5 Literacy 5-12	6	4	3	1	1	1	-	1	-	1	2
LTC6 Teach Lit 5-12 & TESOL K-12	-	-	-	-	-	-	-	-	2	1	1
LTC7 Teach Lit b-6 & TESOL K-12	-	-	-	-	-	-	-	-	-	2	2
MIDDLE CHILDHOOD ED. COMBINED	-	-	-	-	-	-	-	1	1	1	-
MCE5 Middle Childhood 5-6 Extension	-	-	-	-	-	-	-	1	-	-	-
MCE7 Middle Childhood 7-9 Extension	-	-	-	-	-	-	-	-	1	1	-
SPECIAL EDUCATION COMBINED	-	2	4	4	6	6	21	16	30	19	8
CHDS Child Edu/Spec Edu - Non Cert	-	-	-	-	-	-	-	1	1	2	-
CSPE Childhood & Childhood Spec Edu	-	2	4	4	6	6	17	14	20	13	7
TCD Teach Child with DIS Childhood	-	-	-	-	-	-	4	1	9	3	-
TCD1 Teach Stud with Dis 7-12 General	-	-	-	-	-	-	-	-	-	1	1
COUNSELOR COMBINED	39	36	35	32	28	33	43	35	32	20	20
CMHC Clinical Mental Health Counseling Education ¹¹	6	6	5	4	1	1	9	10	16	13	12
SHC School Counselor	33	30	30	28	27	32	34	25	16	7	8
0000 Undecided	1	1	2	8	-	2	-	-	-	-	-
NM Non-Matric	-	-	-	-	16	6	3	4	3	3	2
TOTAL:	191	172	190	214	194	161	146	134	115	76	57
PERCENT CHANGE:		-9.9%	10.5%	12.6%	-9.3%	-17.0%	-9.3%	-8.2%	-14.2%	-33.9%	-25.0%

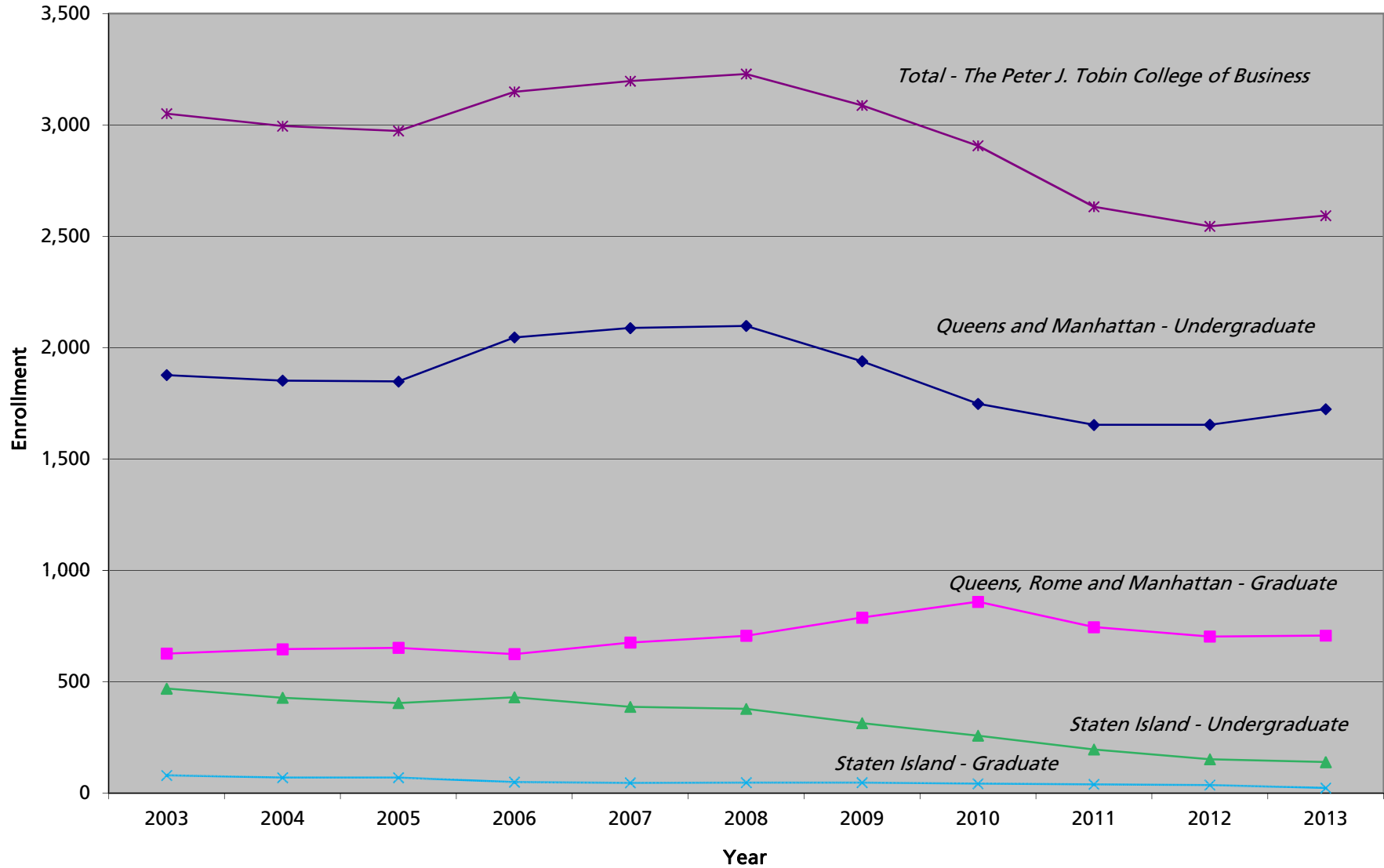
² No longer offered

¹¹ Previously known as Mental Health Counseling & Rehabilitation Counseling

Note: Figures may include Online Learning Students. Please refer to the Online Learning Enrollment Reports.



The Peter J. Tobin College of Business Student Enrollment Fall 2003 - Fall 2013





The Peter J. Tobin College of Business (14)
 Student Enrollment - Undergraduate Division
 Fall 2003 - Fall 2013

Queens Campus

MAJOR	2003	2004	2005	2006	2007	2008	2009	2010	2011	2012	2013
ACCOUNTING COMBINED	384	403	435	488	474	487	499	467	455	406	396
ACC Accounting (BS)	338	365	404	406	421	396	370	368	390	341	334
ACC2 Accounting (BS/MS)	22	11	19	39	39	43	45	53	27	42	28
ACC3 BS Accounting/MS Tax	24	27	12	43	14	41	65	32	22	8	13
ACCF Accounting/Finance	-	-	-	-	-	5	16	14	16	15	17
ACCM Accounting/Managmnt Info Systm	-	-	-	-	-	2	3	-	-	-	-
ACCZ Accounting (BS)/Business Adm (MBA)	-	-	-	-	-	-	-	-	-	-	4
ECONOMICS COMBINED	37	35	38	39	48	63	74	80	86	104	104
ECO Economics	37	35	38	39	48	63	74	80	86	101	97
ECOY Economic (BS)/Accounting (MS)	-	-	-	-	-	-	-	-	-	-	1
ECOZ Economics/Business Admin (MBA)	-	-	-	-	-	-	-	-	-	3	6
FINANCE COMBINED	445	426	400	443	515	560	436	322	296	300	324
FIN Finance	445	426	400	443	515	560	436	322	296	298	321
FINY BS Finance/MS Accounting	-	-	-	-	-	-	-	-	-	2	3
MANAGEMENT COMBINED	352	361	383	410	390	324	307	294	307	315	320
MGT Management	352	361	383	410	390	324	307	294	307	313	317
MGTY BS Management/MS Accounting	-	-	-	-	-	-	-	-	-	2	3
MGT INFO SYSTEMS COMBINED	3	9	10	15	17	16	16	14	11	18	9
MIS Management Information Systems	3	9	10	15	17	16	16	14	11	17	3
MISZ Mgt Info Systems/Business Admin	-	-	-	-	-	-	-	-	-	1	6
MARKETING COMBINED	281	310	280	269	265	266	252	215	208	235	252
MKT Marketing	281	310	280	269	265	266	252	215	208	235	251
MKTY BS Marketing / MS Accounting	-	-	-	-	-	-	-	-	-	-	1
MSC Military Science - Cross Enroll ⁴	16	17	23	28	28	16	26	20	28	12	12
RMIZ Risk Management & Ins (BS)/ Bus Adm	-	-	-	-	-	-	-	-	-	-	1
0000 Undecided	276	186	141	197	179	178	133	144	85	68	79
NM Non-Matric	2	3	1	1	-	1	-	2	2	14	9
TOTAL:	1,796	1,750	1,711	1,890	1,916	1,911	1,743	1,558	1,478	1,472	1,506
PERCENT CHANGE:		-2.6%	-2.2%	10.5%	1.4%	-0.3%	-8.8%	-10.6%	-5.1%	-0.4%	2.3%

Manhattan Campus

MAJOR	2003	2004	2005	2006	2007	2008	2009	2010	2011	2012	2013
ACT Actuarial Science	42	61	79	101	101	109	110	87	78	89	110
RMI Risk Management and Insurance	39	41	58	55	71	78	86	103	97	92	107
RMIZ Risk Management & Ins (BS)/ Bus Adm	-	-	-	-	-	-	-	-	-	-	1
NM Non-Matric	-	-	-	-	-	-	-	-	-	1	-
TOTAL:	81	102	137	156	172	187	196	190	175	182	218
PERCENT CHANGE:		25.9%	34.3%	13.9%	10.3%	8.7%	4.8%	-3.1%	-7.9%	4.0%	19.8%
QUEENS & MANHATTAN TOTAL:	1,877	1,852	1,848	2,046	2,088	2,098	1,939	1,748	1,653	1,654	1,724
PERCENT CHANGE:		-1.3%	-0.2%	10.7%	2.1%	0.5%	-7.6%	-9.9%	-5.4%	0.1%	4.2%

As of Fall 2012, Undeclared students are now coded as Undecided students
 Combined degree students are coded within their major codes

⁴ Students cross-enrolled at other institutions
 Prepared by: Office of Institutional Research (cmg/mh/aj/rd/as)



The Peter J. Tobin College of Business (64)
 Student Enrollment - Undergraduate Division
 Staten Island Campus
 Fall 2003 - Fall 2013

MAJOR	2003	2004	2005	2006	2007	2008	2009	2010	2011	2012	2013
ACCOUNTING COMBINED	112	115	106	125	123	130	131	104	87	73	65
ACC Accounting	106	109	104	117	112	119	117	88	78	65	62
ACC2 Accounting (BS/MS)	6	6	2	8	11	11	14	16	9	8	2
ACCF Accounting/Finance	-	-	-	-	-	-	-	-	-	-	1
FIN Finance	112	76	72	81	99	124	83	57	31	29	29
MANAGEMENT COMBINED	89	86	94	87	71	48	43	42	30	24	18
MGT Management	89	86	94	87	71	48	43	42	30	24	17
MGTY BS Management/MS Accounting	-	-	-	-	-	-	-	-	-	-	1
MKT Marketing	54	46	50	59	40	37	31	28	22	18	17
MSC Military Science ⁴	-	-	-	-	-	-	-	-	1	-	2
0000 Undecided	102	105	81	78	54	39	26	27	25	8	8
NM Non-Matric	-	-	1	-	-	-	-	-	-	-	-
TOTAL:	469	428	404	430	387	378	314	258	196	152	139
PERCENT CHANGE:		-8.7%	-5.6%	6.4%	-10.0%	-2.3%	-16.9%	-17.8%	-24.0%	-22.4%	-8.6%

² No longer offered

Combined degree students are coded within their major codes



The Peter J. Tobin College of Business (34)
 Student Enrollment - Graduate Division
 Queens, Rome, and Manhattan
 Fall 2003 - Fall 2013

Queens Campus											
MAJOR	2003	2004	2005	2006	2007	2008	2009	2010	2011	2012	2013
Master in Business Administration (MBA)	456	433	411	352	311	312	335	322	278	227	234
<i>BUS Business Administration</i>	-	-	-	80	192	243	268	274	239	197	207
ANLT Business Analytics	-	-	-	-	-	-	-	-	-	2	4
CIS Computer Info Systems / Decision Science	-	-	-	3	6	8	8	10	12	12	12
CON Controllership	-	-	-	-	2	1	1	3	4	2	2
CIS Decision Sciences	-	-	-	-	5	3	3	3	2	-	-
FIN Finance	-	-	-	29	76	106	100	89	88	84	82
INTB International Business	-	-	-	13	23	27	37	57	33	14	29
MGT1 Executive Management	-	-	-	11	24	39	43	32	34	33	38
MKT Marketing	-	-	-	24	55	57	74	79	64	48	39
TAX Taxation	-	-	-	-	1	2	2	1	2	2	1
ACC Accounting	1	-	-	-	-	-	-	-	-	-	-
ACC1 Public Accounting	66	75	74	59	36	43	54	45	39	30	27
CIS Computer Info Sys/Decision Sci ⁵	26	27	25	13	4	-	-	-	-	-	-
CON Controllership	-	-	1	1	-	-	-	-	-	-	-
FIN Finance	184	164	137	78	36	10	7	2	-	-	-
INTB International Business	29	24	23	18	5	1	-	-	-	-	-
MGT1 Executive Management	77	65	53	34	20	8	3	-	-	-	-
MKT Marketing	68	75	93	67	16	7	3	1	-	-	-
TAX Taxation	5	3	5	2	2	-	-	-	-	-	-
Master in Science (MS)	60	75	86	83	137	154	207	261	219	224	233
ACC Accounting	19	22	33	38	52	75	123	169	145	130	146
ACC1 Public Accounting	1	-	-	-	-	-	-	-	-	-	-
ACC2 Accounting BS/MS	6	9	7	12	26	25	32	25	32	37	38
TAX Taxation	34	44	46	33	59	54	52	67	42	57	49
Advanced Certificate (APCRT/ADVCRIT)	8	11	4	4	1	2	3	2	3	3	3
ACC1 Public Accounting	5	7	2	2	1	1	1	-	1	-	-
CIS Computer Info Sys/Decision Sci ⁵	1	-	-	-	-	-	-	-	-	-	-
CON Controllership	-	-	-	1	-	-	-	-	-	-	1
FIN Finance	-	2	1	-	-	-	1	2	2	2	1
INTB International Business	-	-	-	-	-	1	-	-	-	-	-
MKT Marketing	1	1	-	-	-	-	-	-	-	-	-
TAX Taxation	1	1	1	1	-	-	1	-	-	1	1
NM Non-Matric	2	-	1	1	1	-	-	-	-	-	-
TOTAL QUEENS:	526	520	502	440	450	468	545	585	500	454	470
PERCENT CHANGE:		-1.1%	-3.5%	-12.4%	2.3%	4.0%	16.5%	7.3%	-14.5%	-9.2%	3.5%

Note: Beginning in fall 2006, New MBA graduate students are coded as Business Administration (BUS) with a specific concentration.

⁵ Formerly Quantitative Analysis

⁶ Formerly Risk Management and Insurance

Prepared by: Office of Institutional Research (cmg/mh/aj/rd/as)



The Peter J. Tobin College of Business (34)
 Student Enrollment - Graduate Division
 Queens, Rome, and Manhattan
 Fall 2003 - Fall 2013

Rome Campus											
MAJOR	2003	2004	2005	2006	2007	2008	2009	2010	2011	2012	2013
Master in Business Administration (MBA)	46	51	42	41	38	37	33	38	30	23	28
<i>BUS Business Administration</i>	-	-	-	13	27	32	32	37	29	23	28
FIN Finance	-	-	-	1	9	6	10	14	9	3	6
INTB International Business	-	-	-	7	12	18	17	17	11	13	9
MKT Marketing	-	-	-	5	6	8	5	6	9	7	13
FIN Finance	21	25	15	13	7	3	1	1	1	-	-
INTB International Business	13	15	13	8	1	-	-	-	-	-	-
MKT Marketing	12	11	14	7	3	2	-	-	-	-	-
NM Non-Matric	1	-	-	-	2	-	-	-	-	-	-
TOTAL ROME:	47	51	42	41	40	37	33	38	30	23	28
PERCENT CHANGE:	-6.0%	8.5%	-17.6%	-2.4%	-2.4%	-7.5%	-10.8%	15.2%	-21.1%	-23.3%	21.7%
Manhattan Campus											
MAJOR	2003	2004	2005	2006	2007	2008	2009	2010	2011	2012	2013
Master in Business Administration (MBA)	40	52	63	70	87	106	119	105	80	76	69
<i>BUS Business Administration</i>	-	-	31	40	64	89	102	85	71	68	61
ACC1 Public Accounting	-	-	-	2	4	1	-	-	-	-	-
FIN Finance	-	-	-	5	34	56	66	48	43	45	46
FINR Financial Management of Risk	-	-	-	-	3	4	3	2	1	1	-
RMI Risk Management & Insurance	-	-	31	33	23	27	32	34	27	22	15
TAX Taxation	-	-	-	-	-	1	1	1	-	-	-
ACC1 Public Accounting	1	1	3	2	2	8	15	19	9	8	8
FIN Finance	7	26	29	28	21	9	2	1	-	-	-
RMI Risk Management and Insurance	32	25	-	-	-	-	-	-	-	-	-
Master in Science (MS)	13	23	45	72	98	95	90	131	134	149	140
ACC1 Public Accounting	-	-	5	12	22	25	30	43	40	40	34
ERM Enterprise Risk Management	-	-	-	-	-	-	-	12	4	5	2
INVM Investment Management	-	-	-	-	-	-	-	13	16	29	39
MGTR Management of Risk (MS) ⁶	13	22	35	49	64	58	48	50	52	57	45
TAX Taxation	-	1	5	11	12	12	12	13	22	18	20
Advanced Certificate (APCRT/ADVCR)	-	-	-	1	1	-	-	-	1	1	-
ACC1 Public Accounting	-	-	-	1	1	-	-	-	-	-	-
CON Controllership	-	-	-	-	-	-	-	-	-	1	-
FIN Finance	-	-	-	-	-	-	-	-	1	-	-
NM Non-Matric	-	-	-	-	-	-	1	-	-	-	-
TOTAL MANHATTAN:	53	75	108	143	186	201	210	236	215	226	209
PERCENT CHANGE:		41.5%	44.0%	32.4%	30.1%	8.1%	4.5%	12.4%	-8.9%	5.1%	-7.5%
QUEENS, ROME & MANHATTAN TOTAL:	626	646	652	624	676	706	788	859	745	703	707
PERCENT CHANGE:		3.2%	0.9%	-4.3%	8.3%	4.4%	11.6%	9.0%	-13.3%	-5.6%	0.6%

Notes: Beginning in Fall 2006, New MBA graduate students are coded as Business Administration (BUS) with a specific concentration. Queens figures include Online Learning Students. Please refer to the Online Learning Enrollment Reports.

⁵ Formerly Quantitative Analysis

⁶ Formerly Risk Management and Insurance

Prepared by: Office of Institutional Research (cmg/mh/aj/rd/as)



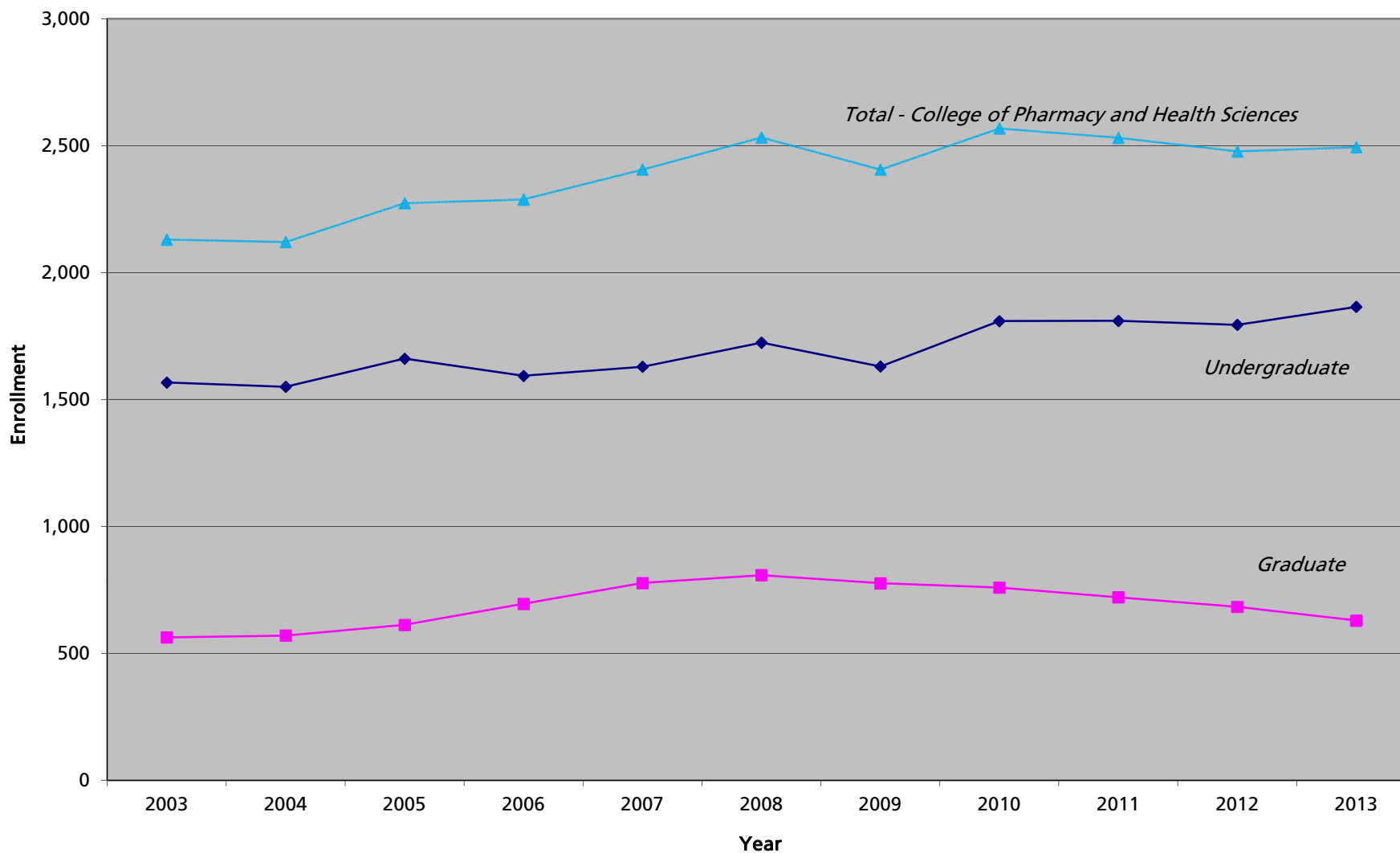
The Peter J. Tobin College of Business (84)
 Student Enrollment - Graduate Division
 Staten Island Campus
 Fall 2003 - Preliminary Fall 2013

MAJOR	2003	2004	2005	2006	2007	2008	2009	2010	2011	2012	2013
Master in Business Administration (MBA)	58	63	60	45	40	37	34	28	23	25	14
<i>BUS Business Administration</i>	-	-	-	1	6	12	18	11	6	8	2
FIN Finance	-	-	-	-	4	6	12	9	5	3	2
MGT1 Executive Management	-	-	-	1	2	6	6	2	1	4	-
MKT Marketing	-	-	-	-	-	-	-	-	-	1	-
ACC1 Public Accounting	8	12	19	17	22	22	15	16	17	17	12
FIN Finance	36	39	27	16	7	2	-	-	-	-	-
MGT1 Executive Management	11	11	13	11	5	1	1	1	-	-	-
TAX Taxation	3	1	1	-	-	-	-	-	-	-	-
Master in Science (MS)	21	6	9	3	6	10	13	14	16	11	9
ACC Accounting	-	-	-	-	-	-	1	-	-	-	2
ACC2 Accounting BS/MS	21	6	9	3	6	10	11	13	16	11	7
TAX Taxation	-	-	-	-	-	-	1	1	-	-	-
0000 Undecided	-	-	-	1	-	-	-	-	-	-	-
TOTAL:	79	69	69	49	46	47	47	42	39	36	23
PERCENT CHANGE:		-12.7%	0.0%	-29.0%	-6.1%	2.2%	0.0%	-10.6%	-7.1%	-7.7%	-36.1%

Note: Beginning in fall 2006, New MBA graduate students are coded as Business Administration (BUS) with a specific concentration.



College of Pharmacy and Health Sciences Student Enrollment Fall 2003 - Fall 2013



Note: Beginning in 2002, 5th and 6th year PharmD students are coded as graduate students.



College of Pharmacy and Health Sciences (05)
 Student Enrollment - Undergraduate Division
 Queens Campus
 Fall 2003 - Fall 2013

MAJOR	2003	2004	2005	2006	2007	2008	2009	2010	2011	2012	2013
CLINICAL LAB SCIENCE/MED TECH	26	43	52	53	54	80	63	51	38	24	31
CLSC Clinical Laboratory Sciences ¹³	-	-	-	-	-	-	-	-	36	24	31
MED Medical Technology	26	43	52	53	54	80	63	51	2	-	-
CYT Cytotechnology²	3	3	-	-	-	-	-	-	-	-	-
PHARMACY COMBINED	1,157	1,137	1,158	1,114	1,114	1,103	1,073	1,199	1,197	1,176	1,230
PHA Pharmacy ²	20	3	-	-	-	-	-	-	-	-	-
PHA6 Pharmacy - 6 Yr PharmD	1,114	1,132	1157	1114	1114	1103	1073	1199	1197	1176	1230
PHAS Pharmacy - Self Pace ³	23	2	1	-	-	-	-	-	-	-	-
PAT Pathologist's Assistant²	6	12	14	14	5	-	-	-	-	-	-
PHYSICIAN ASSISTANT COMBINED	314	288	336	330	379	421	381	373	383	409	420
PNT Physician Assistant	302	286	334	329	379	421	381	373	383	409	420
PNTS Physician Assist - Self Pace ³	12	2	2	1	-	-	-	-	-	-	-
RAD Radiologic Sciences	-	-	-	-	-	55	57	108	127	132	113
TOX Toxicology	61	67	101	82	77	65	56	78	65	52	56
NM Non-Matric	-	-	-	-	-	-	-	-	-	1	15
TOTAL:	1,567	1,550	1,661	1,593	1,629	1,724	1,630	1,809	1,810	1,794	1,865
PERCENT CHANGE:		-1.1%	7.2%	-4.1%	2.3%	5.8%	-5.5%	11.0%	0.1%	-0.9%	4.0%

² No longer offered

³ Not a program

¹³ Formerly Medical Technology



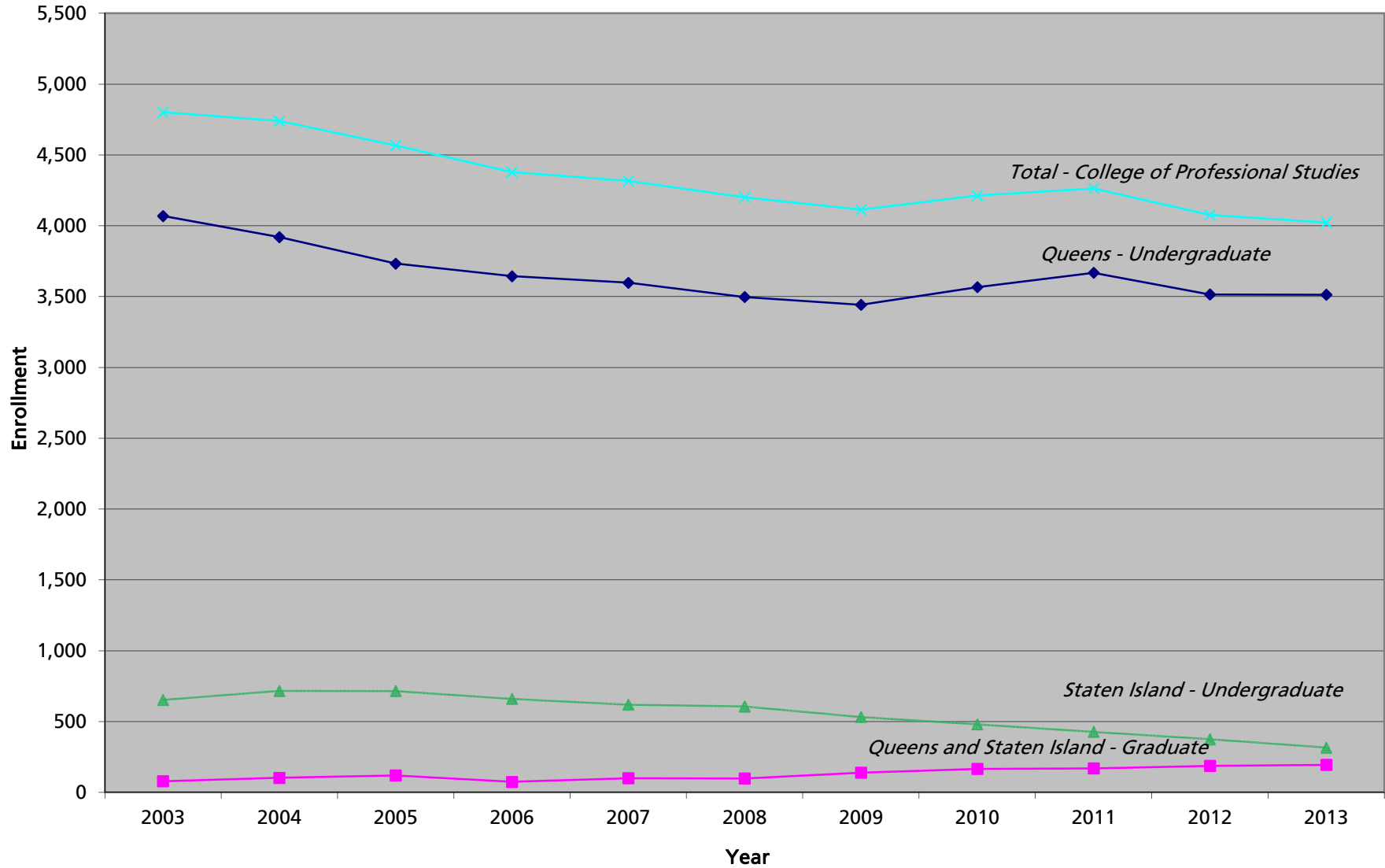
College of Pharmacy and Health Sciences (25)
 Student Enrollment - Graduate Division
 Queens Campus
 Fall 2003 - Fall 2013

MAJOR	2003	2004	2005	2006	2007	2008	2009	2010	2011	2012	2013
MED <i>Medical Technology</i> ²	-	1	-	-	-	-	-	-	-	-	-
PHA1 <i>Pharmaceutical Sciences (MS and PhD)</i>	113	122	130	151	185	203	176	184	174	172	144
PHARMACY COMBINED	427	427	457	518	566	570	567	544	520	489	456
PHA2 Pharmacy Administration	25	23	22	22	33	60	65	46	31	25	26
PHA6 Pharmacy - 6Yr PharmD	343	354	389	460	513	489	489	494	489	464	430
PHA9 Pharmacy, Practitioner Option	59	50	46	36	20	21	13	4	-	-	-
PUBH <i>Public Health</i>	-	-	-	-	-	-	-	-	-	-	6
TOX <i>Toxicology</i>	16	19	20	23	22	31	32	28	23	20	20
NM <i>Non-Matric</i>	7	1	5	3	4	4	1	3	4	2	3
TOTAL:	563	570	612	695	777	808	776	759	721	683	629
PERCENT CHANGE:		1.2%	7.4%	13.6%	11.8%	4.0%	-4.0%	-2.2%	-5.0%	-5.3%	-7.9%

² No longer offered



College of Professional Studies Student Enrollment Fall 2003 - Fall 2013





College of Professional Studies (03)
Student Enrollment - Undergraduate Division
Queens Campus
Fall 2003 - Fall 2013

MAJOR		2003	2004	2005	2006	2007	2008	2009	2010	2011	2012	2013
ADS	Administrative Studies	57	48	38	46	55	64	44	30	45	46	50
ADVERTISING COMMUNICATION COMBINED		-	-	47	96	119	129	125	124	113	116	116
ADV	Advertising Communication	-	-	28	-	-	-	-	-	-	-	-
ADVC	Advertising Communication (Creative Trk)	-	-	6	80	97	99	106	79	60	58	60
ADVM	Advertising Communication (Acc. Mgt)	-	-	10	11	11	17	11	32	33	29	24
ADVP	Advertising Communication (Media Planning)	-	-	3	5	11	13	8	13	20	29	32
BUSINESS COMBINED		112	88	65	66	42	44	65	89	58	41	41
BUS	Business Administration (AS)	94	73	57	61	39	43	65	89	58	41	41
BUS1	Business - Accounting Option (AS)	18	15	8	5	3	1	-	-	-	-	-
COMMUNICATION ARTS COMBINED		443	440	433	424	390	336	330	342	349	351	331
CAS	Communication Arts	442	437	430	420	389	334	329	341	349	345	328
CAS1	Communication Arts/Sociology	1	3	2	4	1	2	1	1	-	4	2
CAS2	Communication Arts/Gov&Politic	-	-	1	-	-	-	-	-	-	2	1
COMPUTER SCIENCE & IT COMBINED		464	345	243	193	177	194	235	243	256	230	249
CUS	Computer Science	259	189	125	121	101	111	126	122	110	94	103
CUS2/CUSB	Computer Science (Business Administration)	123	89	61	33	33	27	20	18	24	22	30
CUS3/CUST	Computer Science (Networking & Telecom.)	69	51	37	13	8	6	6	5	10	6	7
CUSC	Computer Science (Corporate Security)	-	-	-	-	1	-	1	1	-	-	-
CUSF	Computer Science (Cyber Forensics)	-	-	-	-	1	4	3	2	2	1	-
CUSG	Computer Science (Media Graphics)	-	-	1	4	5	-	2	2	2	2	-
CUSH	Computer Science (Healthcare Informatics)	-	-	-	-	-	-	-	-	-	1	-
CUSM	Computer Science (Mathematics)	-	-	-	-	1	-	1	3	1	-	-
CUSS	Computer Science (Security Systems)	-	-	-	2	4	8	7	7	8	14	12
CUSW	Computer Science (Web Services)	-	-	-	-	-	-	-	2	3	1	2
CUSZ	Computer Science (Business Administration)	-	-	-	-	-	-	-	-	-	4	7
CUS1	Microcomputer Systems ²	13	-	-	-	-	-	-	-	-	-	-
CSS	Computer Security Systems	-	-	-	-	1	17	33	54	69	63	-
CSSZ	Computer Sec Sys/Business Admin	-	-	-	-	-	-	-	-	-	2	-
CYB	Cyber Security Systems	-	-	-	-	-	-	-	-	-	-	66
CYBZ	Cyber Security Systems/Business Admin	-	-	-	-	-	-	-	-	-	-	3
IT	Information Technology	-	16	1	2	2	1	16	6	2	1	1
ITB	Information Technology (Business)	-	-	14	12	15	14	14	18	23	15	16
ITC	Information Technology (Corporate Security)	-	-	-	-	-	-	1	-	-	-	-
ITF	Information Technology (Cyber Forensics)	-	-	-	-	-	1	1	2	-	1	-
ITG	Information Technology (Graphic Design)	-	-	1	2	2	3	2	1	2	2	1
ITS	Information Technology (Security Systems)	-	-	-	-	-	1	2	-	-	-	-
ITT	Information Technology (Telecomm.)	-	-	3	4	3	1	-	-	-	-	-
ITZ	Information Technology/Business Admin	-	-	-	-	-	-	-	-	-	1	1
CRIMINAL JUSTICE COMBINED		535	529	509	498	441	409	364	395	425	443	442
CRJ	Criminal Justice (BS)	501	509	456	448	389	371	303	310	339	341	341
CRJ1	Criminal Justice (AS)	30	19	23	18	21	9	7	12	8	1	2
CRJ2	Criminal Justice/Sociology	1	1	6	6	2	-	2	2	-	8	6
CRJ3	Criminal Justice/Gov't & Polit	2	-	1	-	-	-	-	1	-	2	2
CRJ6	Criminal Justice - Legal Studies Spec.	1	-	-	-	-	-	-	-	-	-	-
CRJF	Criminal Justice (Forensic Psychology)	-	-	23	26	29	29	52	70	78	91	81
CRJL	Criminal Justice/Criminal Justice Leader	-	-	-	-	-	-	-	-	-	-	10
DAFT	Dramatic Arts, Film & Television	-	-	-	-	-	-	-	2	10	30	39
ELECTRONIC DATA PROCESS COMBINED		21	1	-	-	-	-	-	-	-	-	-
EDP	Electronic Data Processing (AS) ²	15	1	-	-	-	-	-	-	-	-	-
EDP1	Microcomputer Tech (AS) ²	6	-	-	-	-	-	-	-	-	-	-
ENTR	Enterprise Reg: Profit & Non-Profit	-	-	-	-	-	-	-	-	-	-	15
FSA	Funeral Service Administration	16	10	8	6	6	5	5	7	8	8	10
HCI	Healthcare Informatics	-	-	-	-	-	-	-	6	11	14	20
HCS	Homeland & Corporate Security ¹²	-	-	-	-	-	5	17	43	79	96	111



**College of Professional Studies (03)
Student Enrollment - Undergraduate Division
Queens Campus
Fall 2003 - Fall 2013**

MAJOR		2003	2004	2005	2006	2007	2008	2009	2010	2011	2012	2013
HEALTH SERVICES & HUMAN SERVICES COMBINED		162	177	156	135	151	143	143	135	126	145	166
HSA	Health Services Administration	97	112	104	95	105	102	105	87	59	23	6
HSA2	Health Services Admin/Sociology	-	1	1	-	-	1	-	-	-	-	-
HHS	Health and Human Services	-	-	-	-	-	-	-	15	57	119	160
HSC	Human Services ¹⁰	65	64	51	40	46	40	38	33	10	3	-
HMT	Hospitality Management	90	81	80	102	123	112	116	111	94	97	89
JOURNALISM COMBINED		116	144	162	172	199	188	179	185	183	161	166
JOU	Journalism	116	142	160	171	199	188	179	184	182	158	165
JOU1	Journalism/Sociology	-	1	1	-	-	-	-	1	-	1	-
JOU2	Journalism - Government & Politics	-	1	1	1	-	-	-	-	1	2	1
LAS	Liberal Arts (AA)	237	176	142	95	62	50	38	34	25	16	11
LEGAL STUDIES COMBINED		290	305	349	375	364	405	380	390	399	366	360
LES	Legal Studies (BS)	271	289	329	363	358	401	371	384	392	360	351
LES1	Legal Studies (AS)	15	13	16	11	5	4	6	5	6	4	1
LES2	Legal Studies/Sociology	1	3	-	-	-	-	1	1	-	1	4
LES3	Legal Studies/Gov & Politics	-	-	-	-	-	-	1	-	-	1	4
LES9	Legal Studies (Certificate)	3	-	4	1	1	-	1	-	1	-	-
LGE	Legal Environments of Enterprise	-	-	-	-	-	-	-	2	21	19	-
LST	Liberal Studies	25	25	22	31	500	630	585	604	603	477	410
LIT	Literature & Speech	4	1	-	-	-	-	-	-	-	-	-
NETWORKING/TELECOMMUNICATION COMBINED		77	76	48	28	29	25	12	12	15	15	11
NET	Networking & Telecommunication	-	-	-	-	-	-	9	12	15	15	11
TEL	Telecommunications (BS)	29	26	20	11	11	13	2	-	-	-	-
TEL1	Telecommunications (AS)	3	2	2	-	-	-	-	-	-	-	-
TEL2/TELB	Telecommunications (Business Option)	37	37	19	13	14	9	-	-	-	-	-
TEL3/TELU	Telecommunications (Multi Media)	8	11	7	2	1	-	-	-	-	-	-
TELC	Telecommunications (Corporate Security)	-	-	-	2	-	-	-	-	-	-	-
TELG	Telecommunications (Media Graphics)	-	-	-	-	3	3	1	-	-	-	-
PHOJ	Photojournalism	-	-	-	-	-	-	-	1	12	18	22
PUBR	Public Relations	-	-	-	-	29	87	140	162	204	184	181
SPM	Sport Management	323	330	320	355	338	346	383	413	428	425	430
SSC	Social Science	10	5	3	2	2	1	-	1	-	-	-
TELEVISION COMBINED		107	121	119	143	137	157	196	190	157	146	139
TVF	Television and Film Prod (BS)	80	81	75	136	137	156	194	190	157	146	138
TVF1	Television And Film (AS)	5	8	8	7	-	1	2	-	-	-	1
TVF2	Television And Film Prod/Video	13	9	10	-	-	-	-	-	-	-	-
TVF3	Tele And Film Prod/Film Studies	9	23	26	-	-	-	-	-	-	-	-
0000	Undecided	977	1017	986	875	433	166	84	46	47	44	97
NM	Non-Matric	3	1	3	2	1	1	1	-	-	27	7
TOTAL:		4,069	3,920	3,733	3,644	3,598	3,497	3,442	3,567	3,668	3,515	3,513
PERCENT CHANGE:			-3.7%	-4.8%	-2.4%	-1.3%	-2.8%	-1.6%	3.6%	2.8%	-4.2%	-0.1%

² No longer offered

¹⁰ Formerly offered in The School of Education

¹² Prior to 2008, was known as Security Administration

As of Fall 2005, some major codes were changed to take concentrations into consideration and standardize them in Banner.

As of Fall 2007, "referred/offered" incoming freshmen have been coded as LST. Previously, they were coded as Undeclared/Undecided.

As of Fall 2009, Telecommunications is now Networking and Telecommunications.

As of Fall 2011, Health Services Administration and Human Services are no longer accepting new students. Students are now enrolled in Health and Human Services.

As of Fall 2012, Undeclared students are now coded as Undecided students

Figures include Online Learning Students. Please refer to the Online Learning Enrollment Report.

Combined Degree Students are coded within their major codes



**College of Professional Studies (53)
Student Enrollment - Undergraduate Division
Staten Island Campus
Fall 2003 - Fall 2013**

MAJOR	2003	2004	2005	2006	2007	2008	2009	2010	2011	2012	2013
ADS Administrative Studies	-	1	-	2	2	3	5	3	2	2	2
ADVERTISING COMMUNICATION	-	-	-	-	-	1	4	4	6	7	6
ADVC Advertising Communication (Creative Trk)	-	-	-	-	-	1	2	3	4	6	4
ADVM Advertising Communication (Acc. Mgt)	-	-	-	-	-	-	1	1	2	1	2
ADVP Advertising Communication (Media Planning)	-	-	-	-	-	-	1	-	-	-	-
BUS Business Administration (AS)	112	105	64	42	20	9	8	3	1	7	1
COMMUNICATION ARTS COMBINED	165	161	144	105	110	118	96	76	68	69	47
CAS Communication Arts	165	161	144	105	110	118	96	76	68	68	45
CAS1 Communication Arts/Sociology	-	-	-	-	-	-	-	-	-	1	1
CAS2 Communication Arts/Government and Politics	-	-	-	-	-	-	-	-	-	-	1
CRIMINAL JUSTICE COMBINED	93	110	121	105	92	97	87	92	95	77	70
CRJ Criminal Justice	68	78	100	86	80	84	76	83	87	70	61
CRJ1 Criminal Justice (AS)	25	32	21	19	5	5	3	1	1	2	1
CRJF Criminal Justice (Forensic Psychology)	-	-	-	-	7	8	8	8	7	5	8
FSA Funeral Service Admin	6	9	5	6	6	8	7	4	5	6	5
HCS Homeland & Corporate Security ¹²	1	1	1	1	1	1	1	4	5	7	9
HMT Hospitality Management	17	18	22	20	26	24	27	20	19	10	7
JOU Journalism	-	-	-	-	-	1	5	11	9	5	7
LEGAL STUDIES COMBINED	129	128	125	106	95	90	88	58	48	50	38
LES Legal Studies (BS)	111	106	110	96	90	87	86	57	46	47	36
LES1 Legal Studies (AS)	17	20	14	9	5	3	2	-	2	2	1
LES3 Legal Studies/Gov & Politics	-	-	-	-	-	-	-	-	-	1	1
LES9 Legal Studies (CERT)	1	2	1	1	-	-	-	1	-	-	-
LST Liberal Studies	-	-	-	-	84	128	116	123	95	65	73
PUBR Public Relations	-	-	-	-	-	1	3	4	10	6	7
SPM Sport Management	44	59	61	62	71	59	40	42	32	34	22
TELECOMMUNICATIONS COMBINED	16	19	15	6	3	3	1	1	1	-	-
TEL Telecommunications (BS)	11	12	14	6	3	3	1	1	1	-	-
TEL1 Telecommunications (AS)	2	1	1	-	-	-	-	-	-	-	-
TEL2 Telecommunications (Bus Opt)	3	6	-	-	-	-	-	-	-	-	-
TELEVISION COMBINED	23	22	16	14	12	17	17	19	21	22	15
TVF Television and Film Prod (BS)	20	17	14	14	12	17	17	19	21	22	14
TVF1 Television and Film Prod (AS)	1	2	-	-	-	-	-	-	-	-	1
TVF2 Television & Film Prod: Video	1	2	2	-	-	-	-	-	-	-	-
TVF3 Television & Film Prod: Film Std	1	1	-	-	-	-	-	-	-	-	-
0000 Undecided	47	83	141	191	97	46	27	16	10	5	7
NM Non-Matric	-	-	-	-	-	-	-	-	-	3	-
TOTAL:	653	716	715	660	619	606	532	480	427	375	316
PERCENT CHANGE:		9.6%	-0.1%	-7.7%	-6.2%	-2.1%	-12.2%	-9.8%	-11.0%	-12.2%	-15.7%

Notes:

As of Fall 2005, some major codes were changed to take concentrations into consideration and standardize them in Banner.

¹² Prior to 2008, was known as Security Administration

As of Fall 2007, "referred/offered" incoming freshmen have been coded as LST. Previously, they were coded as Undeclared/Undecided.

As of Fall 2012, Undeclared students are now coded as Undecided students

Figures include Online Distance Learning Students. Please refer to the Online Learning Enrollment Report.

Combined Degree Students are coded within their major codes



College of Professional Studies
Student Enrollment - Graduate Division
Fall 2003 - Fall 2013

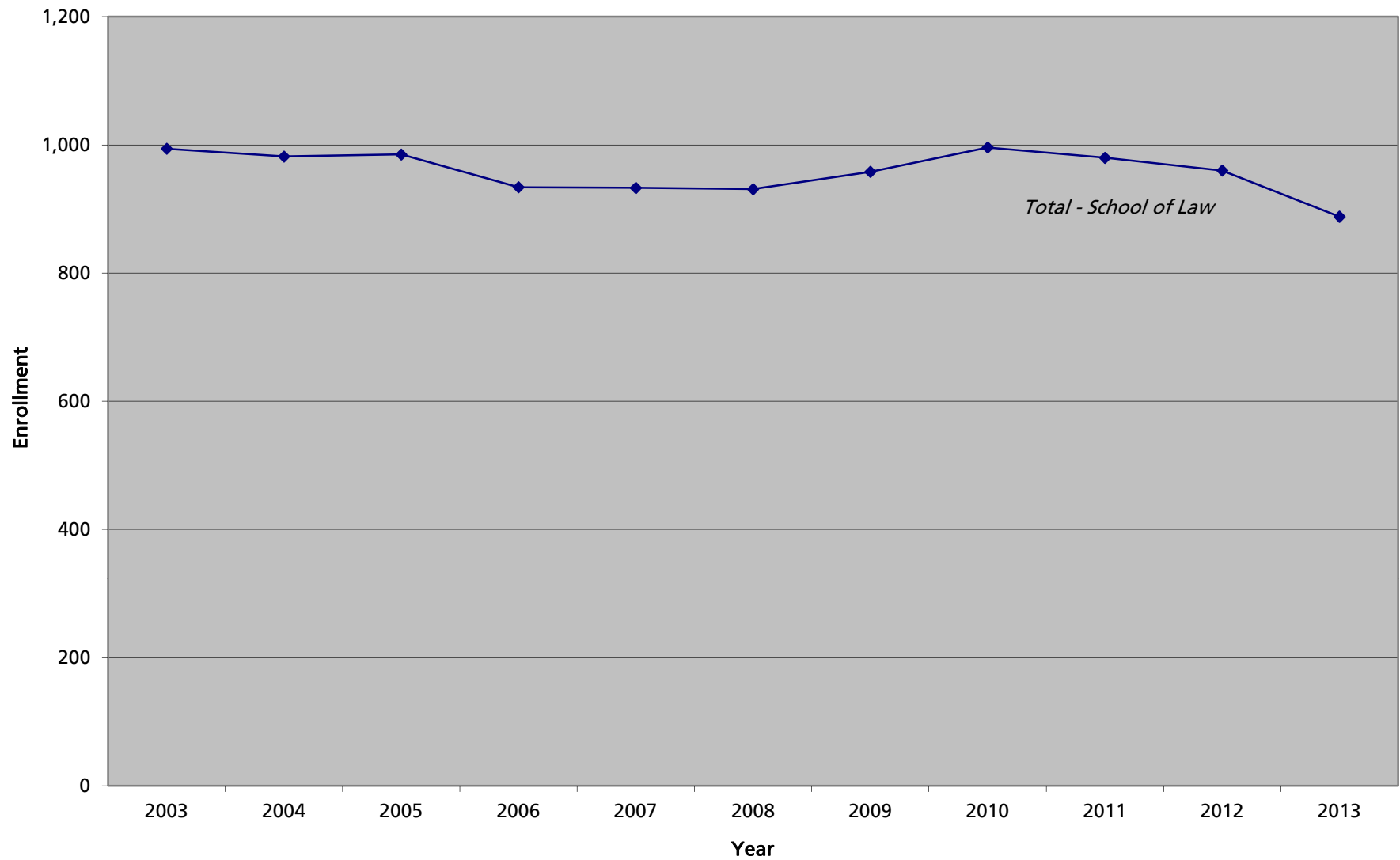
Queens Campus (23)											
MAJOR	2003	2004	2005	2006	2007	2008	2009	2010	2011	2012	2013
CRL Criminal Justice Leadership	54	78	82	46	49	42	52	57	46	61	64
ICM International Communications	-	-	-	-	-	-	26	35	39	45	43
SPM Sport Management	-	-	-	-	23	34	45	58	66	71	81
NM Non-Matric	1	1	2	1	1	2	-	-	7	3	2
TOTAL:	55	79	84	47	73	78	123	150	158	180	190
PERCENT CHANGE:		43.6%	6.3%	-44.0%	55.3%	6.8%	57.7%	22.0%	5.3%	13.9%	5.6%

Staten Island Campus (83)											
MAJOR	2003	2004	2005	2006	2007	2008	2009	2010	2011	2012	2013
CRL Criminal Justice Leadership	24	23	32	22	24	19	12	14	10	7	3
0000 Undecided	-	-	3	5	-	1	1	-	-	-	-
NM Non-Matric	-	1	1	-	3	-	3	2	1	-	1
TOTAL:	24	24	36	27	27	20	16	16	11	7	4
PERCENT CHANGE:		0.0%	50.0%	-25.0%	0.0%	-25.9%	-20.0%	0.0%	-31.3%	-36.4%	-42.9%
Queens and Staten Island Total:	79	103	120	74	100	98	139	166	169	187	194
PERCENT CHANGE:		30.4%	16.5%	-38.3%	35.1%	-2.0%	41.8%	19.4%	1.8%	10.7%	3.7%

Note: Queens figures may include Online Learning or Oakdale Students. Please refer to the Online Learning and Oakdale Enrollment Reports.



School of Law Student Enrollment Fall 2003 - Fall 2013





School of Law (28)
Student Enrollment - Graduate Division
Queens Campus
Fall 2003 - Fall 2013

MAJOR		2003	2004	2005	2006	2007	2008	2009	2010	2011	2012	2013
LAW	Law	974	966	964	922	915	894	922	949	936	890	803
LLMB	Bankruptcy (LLM)	20	16	16	11	16	19	28	29	29	28	20
LLMS	International & Comparative Sports Law (LLM)	-	-	-	-	-	-	-	-	-	13	18
LLMT	Transnational Legal Practice (LLM)	-	-	-	-	-	-	-	-	-	9	18
LLMU	US Legal Studies Foreign Law Grd (LLM)	-	-	-	-	-	17	7	18	15	20	24
NM	Non-Matric	-	-	5	1	2	1	1	-	-	-	5
TOTAL:		994	982	985	934	933	931	958	996	980	960	888
PERCENT CHANGE:			-1.2%	0.3%	-5.2%	-0.1%	-0.2%	2.9%	4.0%	-1.6%	-2.0%	-7.5%



Institute for Biotechnology (39)
Student Enrollment - Graduate Division
Queens Campus
Fall 2003 - Fall 2013

MAJOR	2003	2004	2005	2006	2007	2008	2009	2010	2011	2012	2013
BIOT Biological/ Pharmaceutical Biot	-	-	-	-	9	15	21	20	20	21	22
TOTAL:					9	15	21	20	20	21	22
PERCENT CHANGE:						66.7%	40.0%	-4.8%	0.0%	5.0%	4.8%

Note: This Institute began in Spring 2007



College Advantage Program (09)
 Student Enrollment - Undergraduate Division
 Queens and Staten Island Campuses
 Fall 2003 - Fall 2013

Queens Campus											
MAJOR	2003	2004	2005	2006	2007	2008	2009	2010	2011	2012	2013
CA1 College Advantage Program	1,593	1,512	1,693	1,721	1,708	1,586	1,911	2,803	2,981	3,475	3,519
TOTAL:	1,593	1,512	1,693	1,721	1,708	1,586	1,911	2,803	2,981	3,475	3,519
PERCENT CHANGE:		-5.1%	12.0%	1.7%	-0.8%	-7.1%	20.5%	46.7%	6.4%	16.6%	1.3%

Staten Island Campus											
MAJOR	2003	2004	2005	2006	2007	2008	2009	2010	2011	2012	2013
CA1 College Advantage Program	722	965	959	843	824	762	666	706	945	1,031	984
TOTAL:	722	965	959	843	824	762	666	706	945	1,031	984
		33.7%	-0.6%	-12.1%	-2.3%	-7.5%	-12.6%	6.0%	33.9%	9.1%	-4.6%

QUEENS & STATEN ISLAND TOTAL:	2,315	2,477	2,652	2,564	2,532	2,348	2,577	3,509	3,926	4,506	4,503
PERCENT CHANGE:		7.0%	7.1%	-3.3%	-1.2%	-7.3%	9.8%	36.2%	11.9%	14.8%	-0.1%

*Note: Prior to Fall 2008, the College Advantage Program was coded as High School Extension.
 Figures also include students enrolled as High School Scholars*